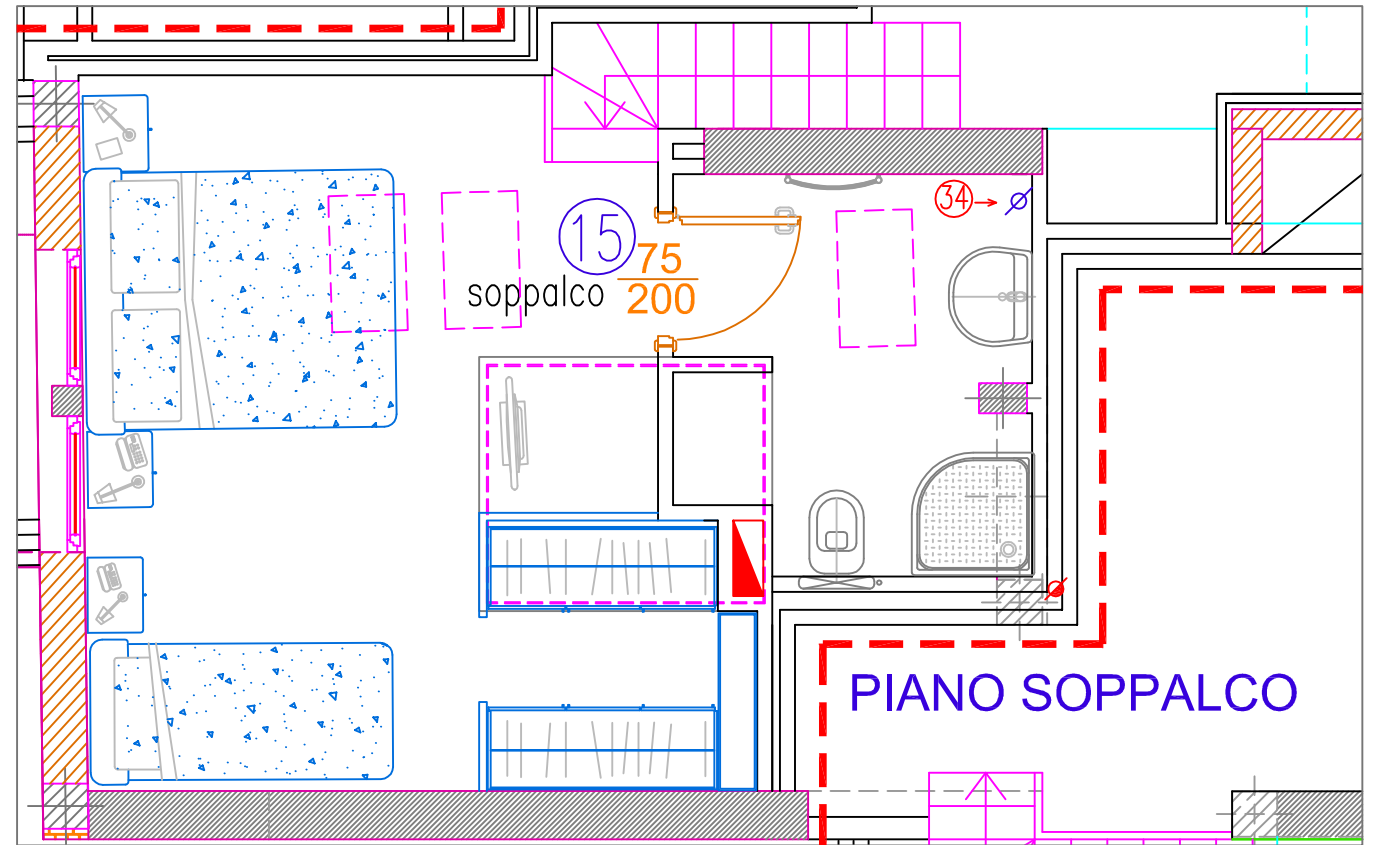
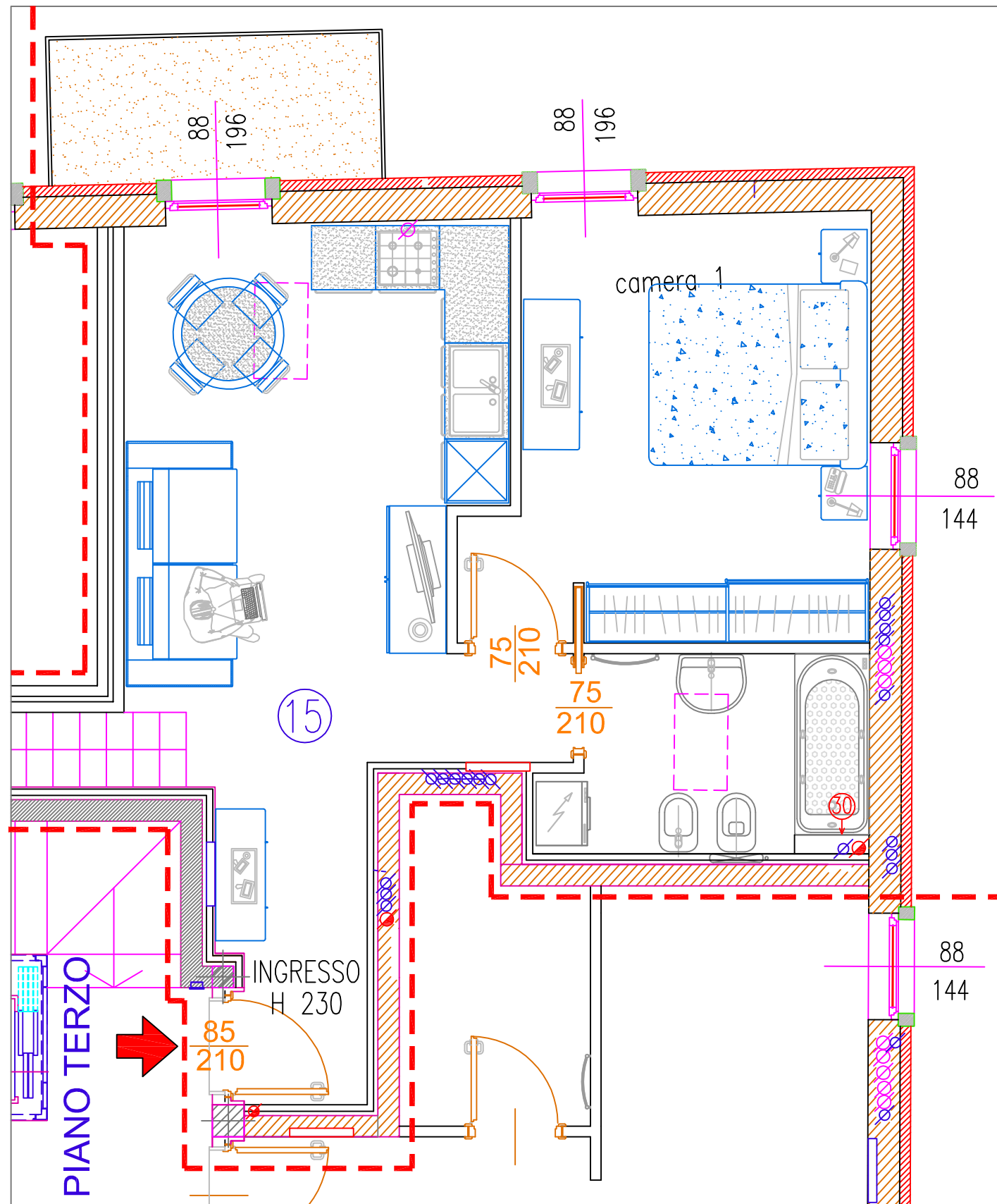


RESIDENZA VILLA FEDERICA - ARCO



ELABORATO SOGGETTO A MODIFICHE ED INTEGRAZIONI (ESCLUSO ARREDAMENTO)



APPARTAMENTO TIPO: 15
GARAGE: 15 - CANTINA: 15
P.A. ESTERNO: 15
PIANO: TERZO
SUP. INT. LORDA: 68,00 mq.
SUP COM.: 96,00 mq.
SUP. BALCONI: 4,25 mq.

